



Description

Gripset Patch-Phalt is a unique pothole and road solution to repair asphalt surfaces that have been affected by holes, cracking, breakup or general damage. Enhanced with polymerised technology Patch-Phalt strengthens and stabilises the repaired surface and assists in maintaining against future pavement breakdown.

As a safe alternative to hot asphalt repairs, Patch-Phalt requires no heating or bulky machinery making it highly portable and user friendly. It requires no priming to activate adhesion to repairs sections and can even be applied to potholes containing water, preventing downtime in wet weather conditions.

Patch-Phalt withstands immediate pedestrian and vehicular traffic after straight application for fast effective repairs.



Features & Benefits

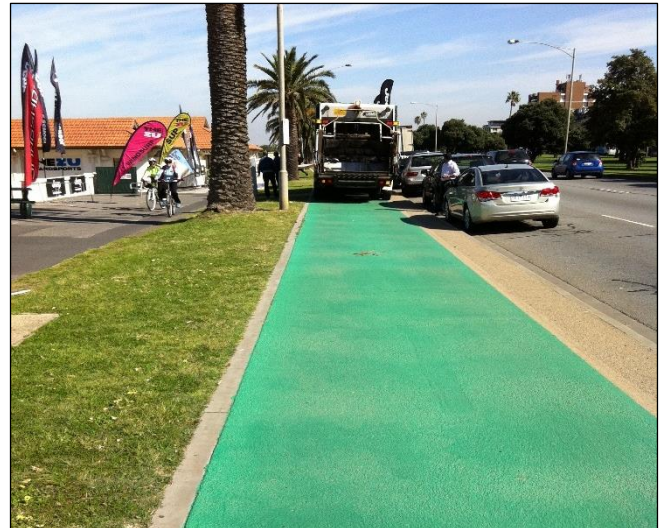
- * Trafficable, pedestrian and vehicular (including heavy vehicles)
- * Non shrinking, flexible (not elastomeric)
- * Resistant to fungi and algae growth
- * Excellent weathering properties
- * Excellent adhesion to surfaces
- * Excellent ponding water resistance
- * Excellent adhesion properties
- * Excellent abrasion resistance
- * Excellent water resistance
- * Good oil and fuel resistance
- * Solvent free, odourless and environmentally safe
- * Available in a range of colours

Application

- * Gripset P17 is suitable for commercial, industrial, civil and residential applications

Uses

- * Car parks
- * Driveways
- * Sports courts
- * Line Marking
- * Recreational areas
- * General areas requiring coloured decorative coating



Surface Preparation

Surfaces must be prepared thoroughly before commencing application. All substrates must be structurally sound, stable, dry, and clean. Surfaces are to be free of sharp protruding surfaces, dirt, dust, loose material, de-bonded coatings and foreign matter.

Large holes/voids in asphalt pavement surfaces are to be made good with Gripset Patch-Phalt repair compound and all cracks filled with Gripset 11Y/DM repair mortar.

Gripset 11Y/DM repair mortar to be used to fill voids and for general repairs to concrete pavements. All cracks to be filled using Gripset C26 crack filler.

Proprietary degreasers and pressure cleaning to be used over any surfaces containing oil, grease or wax residues, to enable proper adhesion to the substrate. If surfaces have been affected by algae, moss etc, use proprietary organic growth removal compounds with pressure cleaning

Priming

Asphalt Surfaces

For asphalt surfaces priming is not required

Concrete Surfaces

Concrete surfaces are to be primed using Gripset P10, applied by brush or roller at a minimum coverage of 1 litre per 10m². Allow to dry for a minimum 24 hours before applying P17 Traffic Coat. Primer must be tack free before applying.

Application & Coverage

Asphalt Surfaces

Gripset P17 Traffic Coat is to be applied in a minimum of 2 x coats at a total minimum coverage of 1litre/m². Apply subsequent coats at different directions to the previous coat.

Concrete Surfaces

Gripset P17 Traffic Coat is to be applied in a minimum of 2 x coats at a total minimum coverage of 1litre/2m². Apply any subsequent coats at different directions to the previous coat. Application by brush or roller or squeegee. Allow 2-4 hours drying between coats of Gripset P17

Note: Coverage is dependent upon surface conditions and will vary accordingly as uneven and porous surfaces will require greater coverage. Application by brush or roller or squeegee. Allow 2-4 hours drying between coats of Gripset P17

Storage

- * Best stored at room temperature.
- * Avoid cold freezing conditions and off concrete floors.
- * Do not store in direct sunlight.
- * Shelf life is 12 months in original container.

Packaging

- * 15Litre pails

Precautions

- * Do not use on wet substrates or when rain is imminent.
- * Do not apply when surface temperature is below 5°C or above 35°C.
- * Safety Data sheet (SDS) available
- * For further information contact technical department of Gripset Industries

Clean up

- * In water while wet.
- * Once dried product needs to be removed mechanically or by solvent.

TECHNICAL DATA

Form	Heavy viscous paint
Drying Based on normal ambient temperatures of 23°C and 50% RH *Temperature, humidity and porosity will vary dry times	Tack free: 1-2 hours Re-coat: 2-4 hours Dry film: 24 hours Traffic: 24 hours
Specific Gravity	1.56kg/litre
Shore A Hardness (ASTM D2240-97)	112
Adhesion to substrates (Erichsen 525 Method)	After 28 days
• Concrete Primed with P10	1.8Mpa
• Compressed cement sheet	1.5Mpa
• Plywood	1.6Mpa
Elongation (AS4858)	45%

Accelerated Weathering
(Xenon Arc)

No physical changes after 500 hours

Water pressure resistance

Water tight at 1.5 bar for > 50 hours

Water vapour permeance
(ASTM E96)

2 g/Pa.s.m²

VOC Content (ISO 13741 – 1)

0.02g/litre

Notes

It is recommended before commencing the application; that adhesion of products to be used (e.g. primers, membranes, coatings adhesives etc) is tested over a typical area of the prepared surface to ensure satisfactory adhesion. It is the responsibility of the applicator to carry this out and accept the substrate suitability before any application starts. Gripset Industries offers a service for pre testing adhesion to surfaces for large commercial areas or unusual substrates. For further details contact Gripset Industries.

Details contained in product data sheets are general. For any situation or items not covered in this data sheet, it is the responsibility of the applicator to check with Gripset Technical Services before commencing the application. A written confirmation will then be issued by Gripset Technical Services.

Gripset Industries Pty Ltd

ABN: 64 137 930 093

Telephone: +61 (8) 8124-7300 or 1800 650 435

Email: techenquiries@gripset.com

Website: www.gripset.com

Product Disclaimer

This Product Data Sheet (PDS) summarises our best knowledge of the product, including how to use and apply the product based on the information available at the time. You should read this PDS carefully and consider the information in the context of how the product will be used, including in conjunction with any other product and the type of surfaces to, and the manner in which, the product will be applied. Our responsibility for products sold is subject to our standard terms and conditions of sale. Gripset Industries does not accept any liability either directly or indirectly for any losses suffered in connection with the use or application of the product whether or not in accordance with any advice, specification, recommendation or information given by it.