



Description

Gripset WB1 is a revolutionary timber treatment product that is 100% natural, made from clever nature based technology that enables timber to be unrecognisable to insects and fungi. WB1 contains no solvents and is free of chemical insecticides, fungicides and synthetic chemical additives. Applied over timber that has been affected by wet or dry rot to reverse the deterioration process by restoring the integral strength of timber as well as forming a fire retardant protective barrier. As WB1 consists of no fungicides, insecticides or pesticides there is no registration requirement as it is essentially a protective timber coating free of any hazardous compounds.



Features & Benefits

- * Water based, free of solvents, non toxic and non flammable
- * 100% natural, free of chemicals, biocides, insecticides and fungicides
- * Restores timber strength
- * Reverses timber rot deterioration process
- * Protects against timber fungi and insects
- * Fire retardant properties
- * No shelf life
- * Can be finished over with paints, stains and oils

Application

Gripset WB1 is suitable for commercial, industrial and residential applications.

Waterproofing Uses

- * Timber rot repairs and strengthening aged timber
- * Protecting timber exposed to weather, moisture and humidity
- * Fascias, timber eaves, window frames, joists, and doors
- * Timber decking
- * External timber structures and furniture
- * Timber surfaces near children, animals, bees and any exposed timber surfaces to ensure no emission or leaching of hazardous chemicals



Surface Preparation

Ensure all loose damaged timber is removed. Surfaces to be treated are to be free of dust, grease, dirt, foreign matter and organic growth. Existing paints, stains and oils should be removed and sanded allowing Gripset WB1 to penetrate into the timber to enable the natural protective and restoration process. WB1 can be applied on timber that is slightly damp, but surfaces must be free of water and not contain excessive moisture. Optimum application is for WB1 to be applied on a dried timber surface.

Coverage

- * Rot repairs, apply a minimum 2 coats at a total coverage of 1Lt/4-6m²
- * Protective coating over new and existing surfaces not affected by rot, minimum 1 coat at a total coverage of 1Lt/8m²
- * Fire retardant protective coating, apply 3 coats at a total coverage of 1Lt/3-4m².
- * Surface condition such as texture and porosity may affect coverage. Applying additional coats of WB1 to surfaces will not have any negative effects on timber.

WB1 can be applied to timber surfaces by brush, roller, spray unit or by dipping method

Drying Times

Re-Coat time2 hours
Application of paints stains or oils (if applicable).....min 72 hours

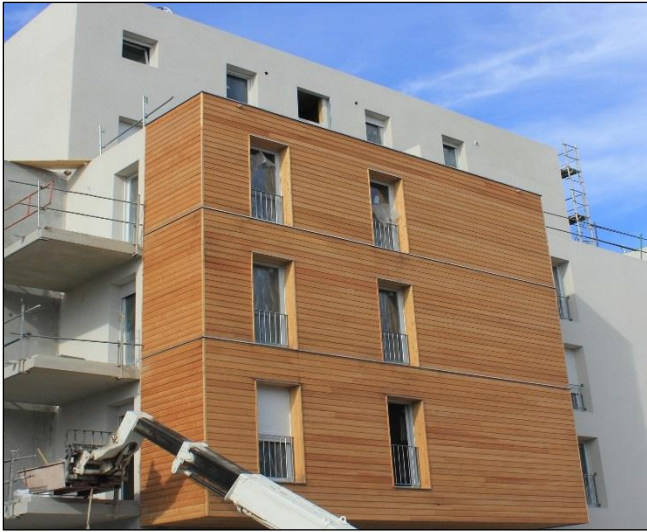
Note: Drying times will vary depending on porosity of timber, type of timber and surrounding environment.

Clean up

Clean up with water while wet. Once product is dried on rollers or brushes, soak in soapy water overnight then rinse thoroughly.

Packaging

- * 5 & 15litre pails



Gripset Industries Pty Ltd

ABN: 64 137 930 093

Telephone: +61 (8) 8124-7300 or 1800 650 435

Email: techenquiries@gripset.com

Website: www.gripset.com

Product Disclaimer

This Product Data Sheet (PDS) summarises our best knowledge of the product, including how to use and apply the product based on the information available at the time. You should read this PDS carefully and consider the information in the context of how the product will be used, including in conjunction with any other product and the type of surfaces to, and the manner in which, the product will be applied. Our responsibility for products sold is subject to our standard terms and conditions of sale. Gripset Industries does not accept any liability either directly or indirectly for any losses suffered in connection with the use or application of the product whether or not in accordance with any advice, specification, recommendation or information given by it.



Precautions

- * Gripset WB1 will not enable non-structural supporting timber to become structurally supporting.
- * Optimum performance is the restoration of the original strength of the timber surface
- * Do not apply to exterior surfaces when rain is imminent, best applied when the area will be free of rain for a minimum 24 hours
- * Do not apply when surface temperature is below 5°C and above 35°C
- * For exposed timber surfaces, the timber will appear stained for the first 14 days before returning to a more natural appearance.
- * For treating timber rot, there will be an ongoing change of the timber appearance in the first month while the natural restoration process takes place
- * Mild temporary discolouration may occur on some timbers, this will only be temporary while the WB1 repair process takes place
- * Porous timber surfaces will appear with a slight "pine coloured" seal effect.
- * Timber will look deeper in colour after the application.
- * Ensure any spillage or wet residues onto metals, glazed surfaces or plastics are immediately removed with a damp cloth/wipe to prevent staining.

Tips

- * Before commencing, the product should be tested on a typical area or surface to check appearance and application.
- * Before using any brushes or rollers, ensure they are dry and do not contain residues from paints, sealers or varnishes.
- * Application tools must be free of any other coatings or residues as these materials will negatively affect Gripset WB1's performance.
- * For optimum natural eco-friendly finish, linseed oil based paints and stains are recommended.

Notes

It is recommended before commencing the application; that adhesion of products to be used (e.g. primers, membranes, coatings adhesives etc) is tested over a typical area of the prepared surface to ensure satisfactory adhesion. It is the responsibility of the applicator to carry this out and accept the substrate suitability before any application starts. Gripset Industries offers a service for pre testing adhesion to surfaces for large commercial areas or unusual substrates. For further details contact Gripset Industries.

Details contained in product data sheets are general. For any situation or items not covered in this data sheet, it is the responsibility of the applicator to check with Gripset Technical Services before commencing the application. A written confirmation will then be issued by Gripset Technical Services.